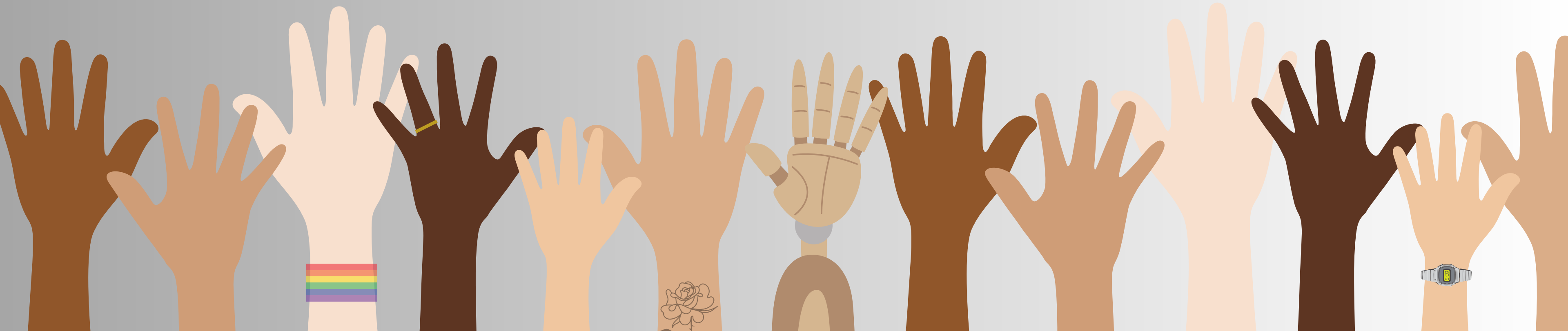


Equality, Diversity and Inclusion: A Statement of Strategic Intent

AUGUST 2023



As inspectorates and regulators, we will:

- **Strengthen the focus on equality and diversity in our work and where we find inequalities we will challenge and report on this.** We will embed equality, diversity and inclusion in our work, to drive improvements in the delivery of healthcare, social care and childcare services for people who share one or more of the protected characteristics.
- **We will improve our engagement with diverse communities so they have a strong voice and influence in our work.** We will increase our understanding of the experiences of people who share one or more of the protected characteristics to inform our decision making.
- **Build our organisations so they are inclusive and representative.** We will build a more diverse workforce that reflects the communities we serve. We will support our workforce to flourish and thrive whatever their background in fair and inclusive workplaces. We will invest in developing the skills and knowledge of our staff and create learning cultures to enable us to evaluate and challenge our understanding of equality, diversity and inclusion.

